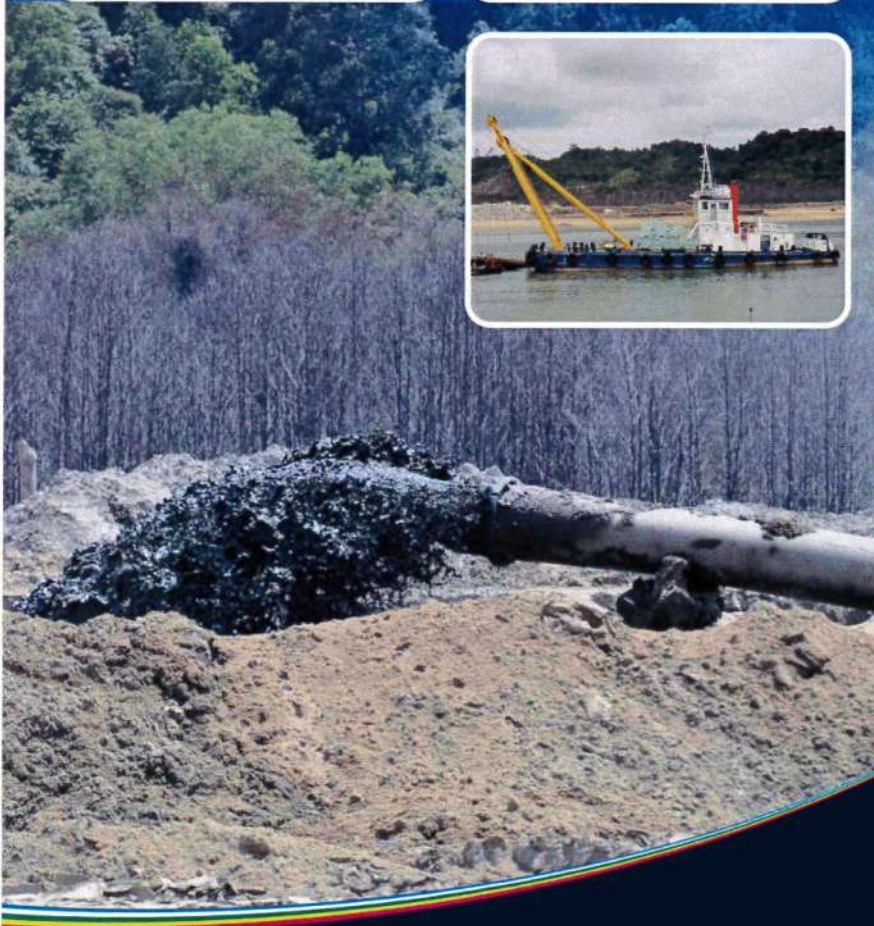


# Specialized in River, Canal Dredging & Reclamation, Sand Filling & Offshore Mining Contractor.



**B&F Engineering & Construction Ltd.**  
176 Montecristo Building (4th & 5th floor), Plot # NE(K)-10A/2,  
Gulshan Avenue, Gulshan -2, Dhaka-1212, Bangladesh





TO WHOM IT MAY CONCERN

Date: 11th April 2016

**Subject : Projects Reference(Track Records)**

**A) Malaysia**

- 2001 May~2001 Nov : **Melaka(2,000,000m3 Land Reclamation project) - Hanjin HI & Construction (Hanjin Heavy Industries Co.,Ltd with Multicore Trading (S) Pte Ltd)**  
Equipments : **Joonsul P-1, Anchor Boat, Daehan P-2**
- 2009 Sept~2010 May : **Sg.Plentong River Rehabilitation Project - Inai Kiara Sdn Bhd(JPS)**  
Equipment : **KSE.Donryu, KSE.AB-3, Discharge Floating Pipe Hose 400m**
- 2009 Nov~2010 Jan : **Sg.Terbrau River Mouth Dredging Proj - Inai Kiara Sdn Bhd(JPS)**  
Equipment : **KSE.Hitachi-Go, KSE.Shimofusa-Go**
- 2010 Jan~2010 May : **Kuching Flood Mitigation Project Stage 1, Phase 1. - Inai Kiara S/B(Naim Holdg)**  
Equipment : **KSE.Hitachi-Go**
- 2011 Aug~2012 Apr : **Danga Bay Channel Dredging Proj - Iskandar Development(Johor Bahru)**  
Equipment : **KSE.Donryu, KSE.AB-3, Discharge Floating Hose 400m**
- 2011 Jul~2011 Dec : **Miri(Sarawak) Beach Nourishment Proj - Petronas-Caligari(East Malaysia)**  
Equipments : **KSE.SPD-3 with Booster Pump Station, KSE.AB-5**
- 2011 Oct~ On Hold : **Kemaman Offshore Base Channel Dredging Proj - Terengganu State Government**  
Equipment : **KSE.Hitachi-Go, KSE.Shimofusa-Go, KSE.SPD-3, KSE.AB-2, KSE.AB-5 & KSE.Gaiko**
- 2013 Jan~2013 Feb : **Pengerang(Johor) Offshore Pilling Proj - Toa (M) Sdn Bhd**  
Equipment : **KSE.AB-5(30Ton Anchor Boat)**
- 2013 May ~ 2013 Jul : **Sipitang(Sabah) Channel Dredging Proj - Petronas Fertilizer(SAMUR, East Malaysi)**  
Equipment : **KSE.Shimofusa-Go, KSE.AB-5 & KSE.Gaiko with 1,000m Floating Rubber Hoses**
- 2014 May~2014 Oct : **Samalaju(Sarawak) Port Dredging Proj - Inai Kiara Sdn Bhd(Bintulu Port Dev)**  
Equipment : **KSE.Kumotori(Bucket Ladder dredger)**
- 2014 Nov ~ Dec : **Tok Jembal Beach Nourishment Proj - JPS(Kuala Terengganu)**  
Equipment : **KSE.SPD-3, KSE.AB-5 & 800m Floating Hoses**



# ***KSE Marine Works Pte. Ltd.***

Reg. No.: 200400697K

## **B) Singapore**

- 2007 May~2007 Aug : **PLB(Exxon Mobil Oil Pipeline Dredging & Sand Filling) - PKDBH JV(JTC)**  
Equipment : **KSE.SPD-1, KSE.AB-2 & Spreader Pontoon's with Floating Hoses**
- 2008 Feb~2008 May : **Pulau Ayer Merbau(Dredging & Reclamation Project) - Hyundai E&C(JTC)**  
Equipment : **KSE.SPD-1, KSE.AB-2 & Spreader Pontoon's with Floating Hoses**
- 2009 Jan ~ 2014 Mar : **Pasir Panjang Port Extension Project - Penta-Ocean Constr'n Co.,Ltd(MPA)**  
Equipment : **KSE.SPD-1 with 12crew's Supply for operation**
- 2012 Jul~2013 Mar : **Tuas Mega Yard Sand & Cofferdam Sand Removal - Zhen Hua/Tiong Woon Oasis**  
Equipment : **KSE.SPD 5, KSE.Donryu, KSE.AB-3 & Spreader Pontoon with Floating Hoses**
- 2014 Nov~28th Feb : **Finger One(Sand Loading Project) - Penta-Ocean Construction Co.,Ltd(HSPBV JV)**  
Equipment : **KSE.SPD-5, KSE.AB-3**
- 2015 Jan ~ Oct : **Finger One(Sand Loading project) - Penta-Ocean Construction Co.,Ltd(HSPBV JV)**  
Equipment : **KSE.Kumotori & KSE.AB-3**
- 2015 Aug ~ : **Pulau Tekong Channel Extension Dredging & Reclamation Project - Santarli/HDB**  
Equipment : **KSE.Hitachi-Go c/w 1,300m Floating Hoses, KSE.AB-3**
- 2015 Nov~ : **Pulau Tekong Channel Extension Dredging & Sand Mining Project - Santarli/HDB**  
Equipment : **KSE.Kumotori, KSE.AB-5**
- 2016 Mar~ : **Matarbali(Bangladesh) Pocket Dredging & Chartering -POC(Coal Power Station)**  
Equipment : **KSE.Shimofusa-Go,KSE.AB-6.KSE.Nikko 100,KSE.Gaiko 1,800m Float/Land pipe**
- 2016 Apr~ : **Finger One(Sediment Discharge) - Penta-Ocean Construction Co.,Ltd(HSPBV JV)**  
Equipment : **KSE.SPD-5 & 200m Floating Hose**

## **C) Sri-Lanka**

- 2009 Mar ~ 2009 Oct : **Supply & install of sand pump(DP600-12W) for Colombo Port proj - Hyundai E&C**  
Equipment : **(Toyo Sand Pump Rental & install onboard crane barge with supervising)**

## **D) Myanmar**

- 2011 Jul ~ 2011 Oct : **Khaw Thaug Dredging & Loading on to 420ft Barges - Starhigh Asia Pte Ltd**  
Equipment : **KSE.SPD-2(Self-Propelled Sand Pump Dredger)**


**KSE Marine Works Pte.Ltd.**



### E) Bangladesh

2016 Mar~30th Apr : **Matarbali(Bangladesh) Pocket Dredging & Chartering -POC(Coal Power Station)**  
Equipment : **KSE.Shimofusa-Go,KSE.AB-6.KSE.Nikko 100,KSE.Gaiko 1,800m Float/Land pipe**

2016 May~Jun : **MatabaLi Substation Dredging & Reclamation Proj. - M/S Aatur Rahman Khan(ARK)**  
Equipment : **KSE.Shimofusa-Go, KSE.AB-6. KSE.NIKKO 100, KSE.Gaiko 600m Float/Land pipe**

2016 Aug~ : **Matarbali Substaion Dredging & Reclamation Proj - Energypac Engrg Ltd(CPGCL)**  
Equipment : **KSE.Shimofusa-Go, KSE.AB-6. KSE.Nikko 100, KSE.Gaiko 600m Float/Land pipe**



# DREDGER'S & RELATED EQUIPMENTS STATUS



**KSE Marine Works Pte.Ltd.(Reg. No : 200400697K)**

No.	Equipments	Capacity/ Model	Built/Made	Weight/ Origin	Dimension	Dredging Depth/Q'ty	Features	Current Deployment
01.	Bucket Dredge KSE.Kumotori	800m <sup>3</sup> /hrx18.5m 0.5m <sup>3</sup> x75pc	Feb 1986 (Japan)	2,200 G/T	72.46/58.0M(L) x 14.60M(B) x 4.50/3.0M(D)-Belize	Max. -18.5 M Min. -6.0 M	Yanmar(T240L-ST) 1,100PS(750KW) x 750rpm, Genset No.1 : 150KW(6HAL-DTN), No.2 : 24KW(410V/50Hz/3p)	Singapore Tekong Proj
02.	CSD KSE.Donryu	1,150m <sup>3</sup> /hr x 70m head x 2,000m	Dec 1995 (Japan)	271 G/T 81 N/T	41.0/35.0M(L) x 11.0M(B) x 2.0/1.0M(D)-Belize	Max. -12.0 M Min. -1.0 M	Niigata 6MG25BX, 1,200HP x 2units, Spud 508(20") x 15.0M. Self Folding Type, Suct/Dis : 350A300A	Kemaman (Terengganu)
03.	CSD KSE.Hitachi-Go	3,300m <sup>3</sup> /hr x 42m head x 1,200m	Nov 1989 (Japan)	668 G/T	59.0/38.4M(L) x 9.5M(B) x 3.2/2.2M(D)-Belize	Max. -11.0 M Min. -2.2 M	Niigata 6MG25CX, 1,200HP x 1unit, Spud 760(30") x 16.0M. Self Adjust Control, Suct/Dis : 560A/550A	Singapore Tekong Proj
04.	CSD Shimofusa-Go	3,300m <sup>3</sup> /hr x 42m head x 1,200m	Oct 1989 (Japan)	668 G/T	59.0/38.4M(L) x 9.5M(B) x 3.2/2.2M(D)-Belize	Max. -14.0 M Min. -2.2 M	Yanmar T260L-ST, 1,200HP x 1unit, Spud 760(30") x 16.0M. Self Adjust Control, Suct/Dis : 560A/550A	Matarbali Bangladesh
05.	Self propelled KSE.SPD-3	4,500m <sup>3</sup> /hr x 20m head	Mar 1989 (Japan)	494 G/T 148 N/T	47.59M(L) x 12.0M(B) x 3.70/2.2M(D)- Tanzania	Max. -50.0 M Min. -3.5 M	Hanshin 1,000PS(735KW) x 370rpm, Yanmar Genset 6KFL-T (185PS) Taiyo 150KVA x 2units, Jet System	Kemaman (Terengganu)
06.	Non Propelled KSE.SPD-5	3,500m <sup>3</sup> /hr x 20m dia 18"(450mm)	June 2012 (S'pore)	272 G/T 81 N/T	40.00M(L) x 12.2M(B) x 2.4/1.2M(D)- Singapore	Max. -30.0 M Min. -2.5 M	GM Generator 1,500KVA/3,300V/60Hz, 10Ton Winches x 5units(Swing/Anchor) with X-Mas - ABS/Spore	Singapore Finger One
07.	Crane Barge KSE.Nikko 100	100Ton Crane	Feb 1996 (Japan)	572 G/T 172 NT	37.80M(L) x 18.0M(B) x 3.0/1.5M(D) Belize	70ft(Boom L) 58.5/15.4m/mi	Kobelco Model : FD-900(Cummins NT855-C335) 316HP/2,100rpm, 3 Mooring Winches(Double Drum)	Matarbali Bangladesh
08.	Anchor Boat KSE.AB-2	5 tons 98PS x Twin	Oct 1962/2012 (Japan)	43 G/T 12 N/T	19.96M(L) x 7.50M(B) x 1.90/1.2M(D)- Malaysia	9.0m(water level)	Yanmar(98PS x Twin) 8knots, 5 Ton double drum winch, Winch Engine : 110PS(Yanmar)	Kemaman (Terengganu)
09.	Anchor Boat KSE.AB-3	4 tons 247PS x 1 unit	1993 (Japan)	16 G/T 5.0 N/T	12.7M(L) x 4.2M(B) x 1.6/1.0M(D)- Kiribati	6.0m(water level)	Otsuka Diesel(178KW,Single)12.0knots, 5Ton Double Drum Winch, Echo Sounder available	Singapore Tekong Proj
10.	Anchor Boat KSE.AB-5	30 tons 230PS x Twin	1977/2010 (Japan)	185 G/T 55 N/T	26.25M(L) x 9.70M(B) x 2.6/1.6M(D)- Tanzania	H:10.5m(dec k level)	M/Eng. Yanmar(230ps x Twin = 460PS) M/Genset, Yanmar(50KVA x 1200rpm) T/Hook:15ton,Speed : 8kt	Singapore Tekong Proj
11.	Anchor Boat KSE.AB-6	5 tons 350PS x 1 unit	2002 (Japan)	30 G/T 9.0 N/T	16.54/14.34M(L) x 3.99M(B) x 1.45/1.0M(D) - Belize	1 unit	M/Eng : Yanmar 6KH-UT(257.43KW) Unic Crane 3Ton x 2units, Bow Thruster	Matarbali Bangladesh
12.	Tugboat KSE.Gaiko	730PS x Twin (T/ Hook : 25Ton)	1970/2010 (Japan)	182 G/T 54 N/T	29.3/26.74M(L) x 8.0M(B) x 3.4/2.4M(D) - Tanzania	1 unit	Kort Nozzle with Kamome CPP Propeller, Daihatsu 1,460PS, Kubota Genset 40KVA,Speed:12kt	Matarbali Bangladesh
13.	Booster Pump KSE.BPS-2	3,600m <sup>3</sup> /hrx70m head x 1.500m	1994 (IHC-Holland)	22.0 Ton	5.70m(L) x 1.80m(B) x 2.50m(H)	1 unit	IHC 20" x 18"(876KW x 483rpm)-Double Casing, Engine : Cat 3512DITA 1,300HP(925KW) x 1,600rpm	Kemaman (Terengganu)
14.	Sub Agitate Pump DP-50	192m <sup>3</sup> /hr x 25m dia 6"(150mm)	Toyo-Denki	955 kgs	1,58m x 0.65m x 0.56m	MAX: -30.0 M MIN: -0.5 M	37KW x 200V x 60Hz(10M power cable available)	Singapore

No.	Equipment	Capacity/ Model	Built/Maker	Weight/ Origin	Dimension	Q'ty	Features	Current Deployment
15.	Transformer	1,000KVA	Mitsubishi 2000(Japan)	2,500 kgs	1.2m x 0.8m x 1.6m	1 unit	1,000KVA/440V/60Hz to 3,300V/60Hz/3Phase	Singapore
16.	Electric-Hydro Winch	10 Ton		Japan	2.4M x 1.8M x 2.0M(6 Ton)	1 unit	Rope dia 30mm x 250M, Single Drum	Singapore
17.	Electric Winch	1.5 Ton	Seibu Electric	Japan	1.2M x 0.8M x 1.0M(0.87 Ton)	2 units	PWD-15, 15KW x 6P, Rope dia 16mm x 200M, Speed : 42m,50m/min x 35.2/42.3rpm x 50/60Hz, Single Drum	KSE..SPD-5
18.	Jet Pump	600m <sup>3</sup> /hr x 50M head	Ebara	760 kgs/ Japan	1.5M(L) x 0.9M(W) x 1.2M(H)	1 unit	Size : Suction 300mm x Discharge 200mm, Motor : 110KW, AC 440V x 60Hz	Singapore
19.	Ejector Pump	2,300m <sup>3</sup> /hr x 83M head	Ebara	Japan	4.10M(L) x 1.90M(W) x 2.50M(H)	1 set	Motor : 700KW/60Hz/3,300V/1180rpm/6pole (Meidensha) Size : 500mm x 350mm	Singapore
20.	Pontoon Type Steel Floater's	Steel	Fabricated	S'pore	6.0M x 3.0M/3.0M x 5.5M	6 units	Brand New(each 2 units @ Sg.Plentong/PPT Proj)	Singapore/ Kemaman
21.	Pipe Type Steel Floater's	Steel	Fabricated	S'pore	Length : 11.0M/7.0M	4 units	Brand New(5 units @ PPT Proj)	Matarbali Bangladesh
22.	Total Surveyor Instrument	SET 1000	Sokkia	Japan		1 set	APS 12/S x 2units c/w Tripod	Singapore
23.	Rubber sleeve	JIS 10K	Ohji	Japan	22"(550mm) x 1.50m	120 pcs	Brand New & Used	Kemaman
24.	Self Floating Rubber Hose	Din 150#	Yokohama	Japan	ID 16"(400mm) x 11.5m	17 pcs	Brand new & Used	Singapore Finger One
25.	Self Floating Rubber Hose	Din 150#	Yokohama	Japan	ID 20"(500mm)/24"(600mm) x 12.2m	113/6 pcs	Yokohama/Dunlop	Matarbali Bangladesh





### **KSE.SHIMOFUSA-GO(Cutter Suction Dredger)**

- |                            |  |
|----------------------------|--|
| 01. Dimension              | : 49.0m/36.86m(L) x 9.5m(B) x 3.2m(D) x 2.2m(Draught)              |
| 02. Year Built             | : Nov, 1989 (Niigata Shipyard Co.,Ltd Japan)                       |
| 03. Gross Tonnage          | : 417/125 Tons   |
| 04. Nationality            | : Belize(Reg.No : 131010835)                                       |
| 05. Main Pump Engine       | : Yanmar T260L-ST, 1,200PS x 750rpm                                |
| 06. Pump Capacity/Impeller | : 3,300m <sup>3</sup> /hr at 42m head/ 4blade x 1,500mm x 367rpm   |
| 07. Main//Aux Generator    | : 500KVA,Yanmar T220L-UT//80KVA,Yanmar AG80S-2                     |
| 08. Cutter Motor           | : 175KW(230PS) x 18.07rpm, 400V/50Hz/10P                           |
| 09. Swing, Spud & Ladder   | : 37KW/10P/200V & 30KW/10P/200V                                    |
| 10. Dredging Depth         | : <b>Min. -2.2m, Max. -13.0m</b> , Able to extendable up to -18.0m |
| 11. Suction/Discharge Bore | : 560A(22") x 550A(22")  |
| 12. Discharge Distance     | : 1,500m(max), subject to materials                                |
| 13. Spud Size              | : Dia 760mm(30") x 22.0mL x 2 units(Self Folding Type)             |
| 14. Operation Crew's       | : 6 men(14 Crew's Accommodation available)                         |

**\*\* REMARK \*\*** : Spud, Control Room to be self adjust height(passing bridges water level to 5.7m)



### **KSE.NIKKO 100(100Ton Crane Barge)**

<b>01. Dimension</b>	<b>: 37.80(L) x 18.00m(B) x 3.00m/1.5m(D)</b>
<b>02. Year Built/Country</b>	<b>: Feb, 1996(Japan)</b>
<b>03. Gross/Net Tonnage</b>	<b>: 572/172</b>
<b>04. Nationality</b>	<b>: Belize(Reg. No : 131520959)</b>
<b>05. Crane Specification</b>	<b>: Kobelco Model : FD-900.</b>
<b>06. Lifting Capacity(Main/Aux)</b>	<b>: 100Ton/10Ton</b>
<b>07. Boom Length</b>	<b>: 21.34m(70ft)</b>
<b>08. Speed(Wire Rope)</b>	<b>: Lifting(58.5m/min) Down(15.4m/min), Swing : 2.0rpm</b>
<b>09. Engine Model/Capacity</b>	<b>: Cummins NT855-C335, 316HP/2,100rpm</b>
<b>10. Generator's</b>	<b>: Airman 125 KVA/Denyo 220KVA</b>
<b>11. Winches</b>	<b>: Four(4) point mooring Winches(3units)</b>
<b>12. Orange Peer Bucket</b>	<b>: 5 m3 available for Stone Work</b>
<b>13. Spud Holes</b>	<b>: Available Port/STBD(2) for Spud</b>





### **KSE.AB-2(Anchor Boat)**

<b>01. Dimension</b>	<b>: 19.96m(L) x 7.50m(B) x 1.90m(D) x 1.7m(Draught)</b>
<b>02. Year Built/Rebuilt</b>	<b>: 1962. Japan(Nippon Steel Co.,Ltd)/2011(Malaysia)</b>
<b>03. Gross/Net Tonnage</b>	<b>: 43/12 Ton</b>
<b>04. Licence No.</b>	<b>: TKM 00044X</b>
<b>05. Registration(Nationality)</b>	<b>: Malaysia</b>
<b>06. Main Engine</b>	<b>: Yanmar 95PS x Twin Engine = 190PS</b>
<b>07. Winch Engine</b>	<b>: Yanmar 115PS</b>
<b>08. Lifting Capacity</b>	<b>: 5.0 Ton</b>
<b>09. Lifting Height</b>	<b>: 7.5 metre</b>
<b>10. Service Speed</b>	<b>: 8.0 knots</b>



### **KSE.AB-3(Anchor/Work Boat)**

<b>01. Dimension</b>	<b>: 12.70m(L) x 4.20m(B) x 1.60m(D) x 1.0m(Draft)</b>
<b>02. Year Built</b>	<b>: 1993. Japan(Miura Shipyard Co.,Ltd)</b>
<b>03. Gross/Net Tonnage</b>	<b>: 16/5 Ton</b>
<b>04. Registration(Nationality)</b>	<b>: Kiribati(K-15931256)</b>
<b>05. Main Engine</b>	<b>: 247PS(178KW) x Single Engine-Otsuka Diesel</b>
<b>06. Lifting Capacity</b>	<b>: 5.0 Ton</b>
<b>07. Lifting Height</b>	<b>: 3.0 metre</b>
<b>08. Service Speed</b>	<b>: 12.0 knots</b>
<b>09. Remark</b>	<b>: Echo Sounder &amp; VHF Installed.</b>





### **KSE.Gaiko(Harbour Tugboat)**

<b>01. Dimension</b>	<b>: 29.30/26.74m(L) x 8.00m(B) x 3.4m(D) x 2.4(Draught)</b>
<b>02. Year Built/Re-build</b>	<b>: Jan 1970(Shimoda Dockyard Co.,Ltd. Japan)/Dec 2010</b>
<b>03. Gross/NT Tonnage</b>	<b>: 182/54 Ton</b>
<b>04. Nationality/Call Sign</b>	<b>: Tanzania(Reg. No.: 3004403)/51M 653</b>
<b>05. Main Propulsion Engine</b>	<b>: Daihatsu, 730PS x Twin Engine = 1,460PS(6PSHTbM-26D)</b>
<b>06. Main//Aux Generator</b>	<b>: Kubota 25KVA/40PS // 15KVA/25PS</b>
<b>07. Propeller System</b>	<b>: Kort Nozzle type &amp; Kamome CPP(CPR-45V)</b>
<b>08. Speed</b>	<b>: 12knots</b>
<b>09. Operating Crew</b>	<b>: 6 crew's(Accommodation)</b>
<b>10. Towing Hook</b>	<b>: 25Ton</b>
<b>11. Towing Winch</b>	<b>: 15Ton(37KW Motor)</b>
<b>12. Radio Communication</b>	<b>: GMDSS Radio Equipment Installed</b>

**Remark : Dry Docking repair on September 2015**



### **KSE.BPS-2(Booster Pump Station)**

- |                            |  |
|----------------------------|--|
| 01. Maker/Model            | : IHC Merwede, 125-27.5-50   |
| 02. Suction/Discharge Bore | : 510mm(20") x 458mm(18") - Double Casing  |
| 03. Pump Capacity          | : 3,600m <sup>3</sup> /hr x 70m head(540m <sup>3</sup> ~ 720m <sup>3</sup> , Sand) |
| 04. Power at Shaft         | : 876KW x 483rpm   |
| 05. Impeller Size          | : 1,270mm(Dia) x 345mm(W) - 5 Blade  |
| 06. Gearbox/Clutch Maker   | : IHC Sliedrecht BV  |
| 07. Gearbox Ratio          | : 3.423 to 1(1,600rpm/458rpm)  |
| 08. Pump/Total Weight      | : 13,500kgs/22,000kgs  |
| 09. Engine Power           | : 1,300HP(925KW) x 1,600rpm(Cat 3512DLTA)  |
| 10. Discharge Distance     | : 1,200m~1,500m(subject to soil density)   |